

Thank you for choosing the T-Mobile Sonic 4G Mobile Hotspot

- Supported functions and actual appearance depend on the specific models you purchased. The following illustrations are provided for your reference only. For details about the model you selected, consult your service provider.
- This guide briefly describes the functions of the Mobile Hotspot. For details about how to set management parameters, see Help on the web management page.
- If the Mobile Hotspot is placed in an environment with poor ventilation, it may overheat after extended use. When the Mobile Hotspot overheats, it will switch off or disconnect from the network automatically to protect itself. If this happens, place the Mobile Hotspot in a well-ventilated location, then restart the Mobile Hotspot.

Getting to Know Your Mobile Hotspot

Packing List

The package should contain the following items. If any of the items are missing or damaged, contact your local dealer immediately.



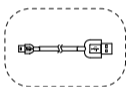
Quick Start Guide
Safety Information



Mobile Hotspot



Battery



Data cable



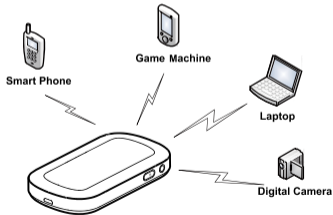
Charger

Some accessories are optional and are not provided with the modem. To purchase any optional accessories, contact your local dealer.

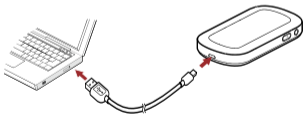
Connection Scenarios

A Wi-Fi device or computer can be connected to the Internet through the Mobile Hotspot. The actual connection procedure depends on the operating system of the Wi-Fi device or computer. The connection scenarios illustrated here are for your reference.

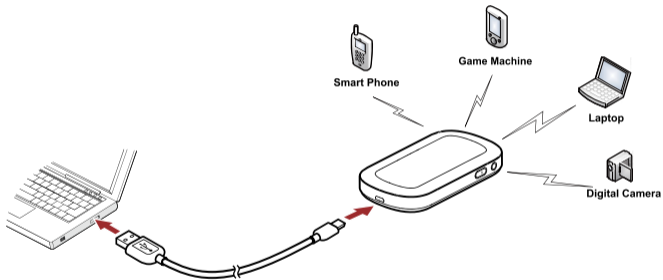
Scenario 1: Multi-device access via Wi-Fi



Scenario 2: One-device access via USB



Scenario 3: Multi-device access via Wi-Fi and USB at the same time

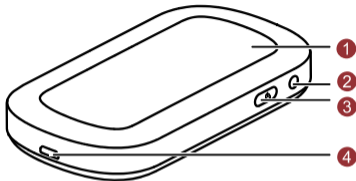


Appearance

No.	Item
1	Screen
2	WPS button
3	Power button
4	USB connector

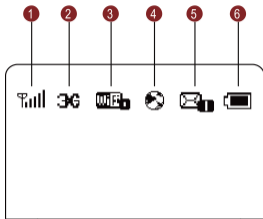
Note:

WPS: Wi-Fi protected setup



Screen

No.	Item
1	Signal strength
2	Network
3	<ul style="list-style-type: none">• Wi-Fi enabled• Number of devices connected
4	Internet connection
5	<ul style="list-style-type: none">• New messages• Number of new messages
6	Battery level



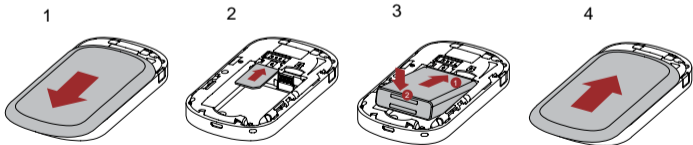
Before You Start

Installing the SIM Card and the Battery

Caution: Do not use any SIM card that is not standard or is incompatible with the Mobile Hotspot. Otherwise, the Mobile Hotspot may be damaged.



Install the SIM card in the card slot. Be sure that the SIM card is facing in the right direction, as shown in figure 2, and then slide the SIM card into the slot.

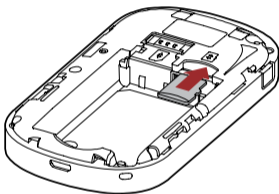


Installing the microSD Card

Note:

The microSD card is an optional accessory. If a microSD card did not come with your Mobile Hotspot, you may purchase one yourself.

- To remove the microSD card, press in the card gently. The microSD card will pop out for removal.
- Do not remove the microSD card when it is in use. Doing so may damage the card and the Mobile Hotspot, and data stored on the card may be lost.



Charging the Battery

Note: If the battery has not been used for a long time, it must be charged first.

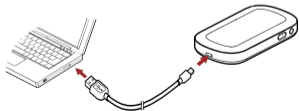
Method 1: Using the charger

Caution: Only use chargers compatible with the Mobile Hotspot and provided by a designated manufacturer. Use of an incompatible charger or one from an unknown manufacturer may cause the Mobile Hotspot to malfunction, fail, or could even cause a fire. Such use voids all warranties, whether expressed or implied, on the product.



Method 2: Connecting to a PC for charging

Connect the Mobile Hotspot to a PC using a compatible data cable.



Accessing the Internet via Wi-Fi Connection


Note: By default, management parameters are preset on the Mobile Hotspot according to the requirements of the service provider. Follow the steps below to quickly access the Internet. For the details about how to set management parameters, see *Help* on the Web management page.

Step1: Power on the Mobile Hotspot.

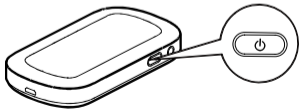
Step2: Establish a Wi-Fi Connection.

Step3: Access the Internet.

1. Power on the Mobile Hotspot

Press and hold  until the screen lights up. The Mobile Hotspot is powered on.

Note: Press and hold  to power off the Mobile Hotspot.

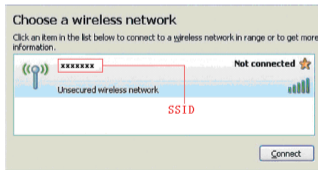
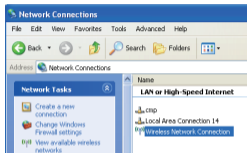


2. Establish a Wi-Fi Connection (Take a computer with Windows® XP operating system as an example)

1. Make sure that the Wi-Fi is enabled.
2. Select **Start > Control Panel > Network Connections > Wireless Network Connection**.

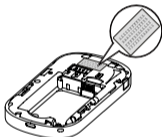
Note: To set up a Wi-Fi connection, the PC must have a wireless network adapter installed. If **Wireless Network Connection** is displayed, a wireless network adapter is available. Otherwise, check to make sure you have a wireless network adapter installed.

3. Click **View available wireless networks** to display a list of wireless networks available.
4. Select a network that has the same SSID as that of the Mobile Hotspot, and then click .



Note:

- If the encryption parameter is already set for the Mobile Hotspot, the **Wireless Network Connection** dialog box is displayed. Enter the network key in the dialog box as shown below.
- The SSID and key label are affixed to your Mobile Hotspot, as illustrated below.



Wait until the wireless connection icon is displayed in the status area in the lower right corner of the PC screen.

Accessing the Web Management Page

1. Make sure that the connection between the Mobile Hotspot and the client is a proper one.
2. Start the Internet browser and enter <http://192.168.1.1> in the address bar.
3. Enter the password, and then click **Login**.

Note: The default password is **admin**.

Changing the login Password

You can change the login password to prevent unauthorized users from logging in to the management page.

1. Choose **Setting > Device Setting > Change Admin UI Password**
2. Enter the current password, and then enter the new password and confirm it.
3. Click **Modify**.

Configuring the WLAN SSID and Password

The service set identifier (SSID) is used to identify a WLAN. A Client and the device can perform normal data communication only when they have the same SSID. To ensure the WLAN security, do not use the default SSID. You can enter a character string as the SSID, such as MyHome.

1. Click **Setting** > **Device Setting** > **Change SSID & Password**
2. Change the default SSID in the **(Name) SSID** textbox.
3. Click **Next**.
4. Change the default SSID Password in the **WPA Pre-Shared Key** textbox.
5. Click **Finish**.

Note: To access the WLAN easily, you can select **Enabled** for SSID Broadcast when you configure the WLAN settings. After the settings, you can select **Disabled** to improve the WLAN security.

Validating the PIN Code

If PIN code protection is enabled, log in to the web management page and follow the prompts to enter the correct PIN code. Both PIN and PUK are delivered with the SIM card. For details, consult your service provider.

Daily Use

Power Saving Mode

If the Mobile Hotspot is idle for a period of time, the screen turns off.


If the Mobile Hotspot is using battery power and does not process data transmissions for 10 minutes, it goes to deep sleep state and Wi-Fi is disabled.

When the Mobile Hotspot is in deep sleep state, press any key to enable Wi-Fi and light up the screen.

Establishing a WPS Connection

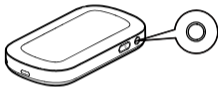
If a Wi-Fi client connected to the Mobile Hotspot supports the WPS function, the Mobile Hotspot can generate a network key without manual input. To establish a WPS connection, perform the following steps:

1. Power on the Mobile Hotspot.
2. Start the client.
3. Enable the WPS function of the Mobile Hotspot.

Note: Press and hold  to enable the WPS function of the Mobile Hotspot.

4. Enable the WPS function of the client.

Note: For client Wi-Fi operations, see the clients' user guide.

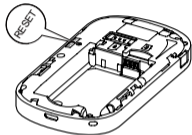


Restoring Factory Defaults

If you forget the changes you have made to some parameters, you may restore factory defaults and reconfigure the Mobile Hotspot.

To restore the factory defaults, press and hold the RESET button until the screen turns off. All factory default settings are successfully restored.

Note: Restoring factory defaults deletes all personal configuration settings and restores all web-based management settings and parameters to their default values.



Tips

If you are experiencing difficulties using the Mobile Hotspot, try the following:

- See *Help* on the web management page.
- Restart the Mobile Hotspot.
- Restore the factory defaults.
- Contact your service provider.